

# Wireless Printing in Mac OS X with IPP

At Concordia University of Edmonton

## Overview

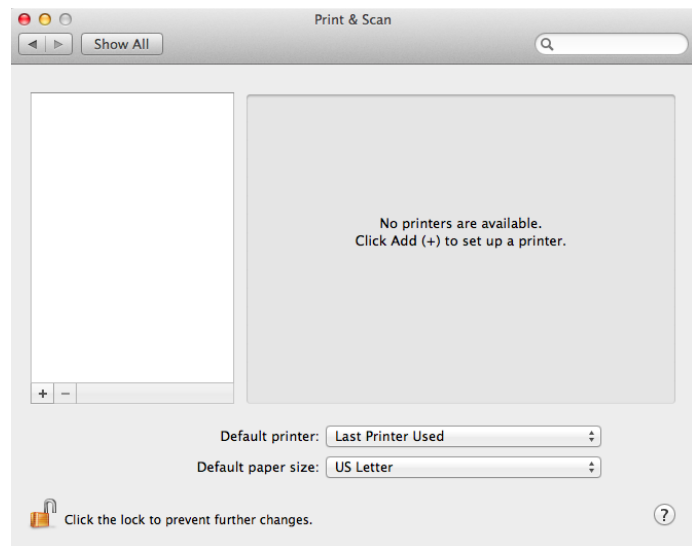
Concordia offers access to the campus printer, CUCA\_PRINT, through the Internet Printing Protocol which enables printing wirelessly from many Internet-connected devices using your Concordia account.

It has the advantage of being a regular Mac OS X printer, so you are able to print from any application.

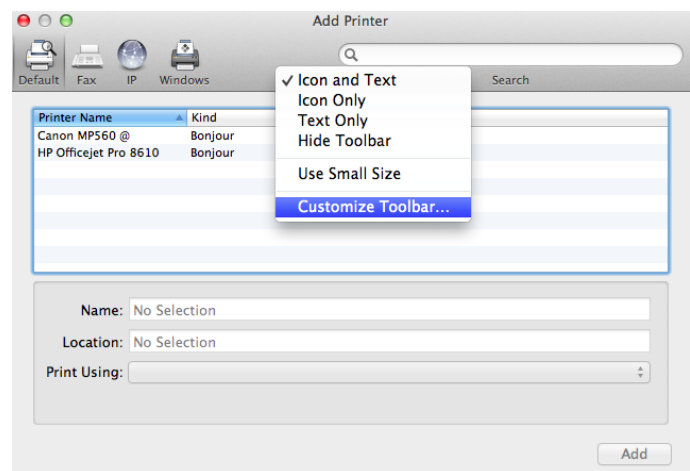
This document describes how to setup and use that printer in Mac OS X.

## Setup

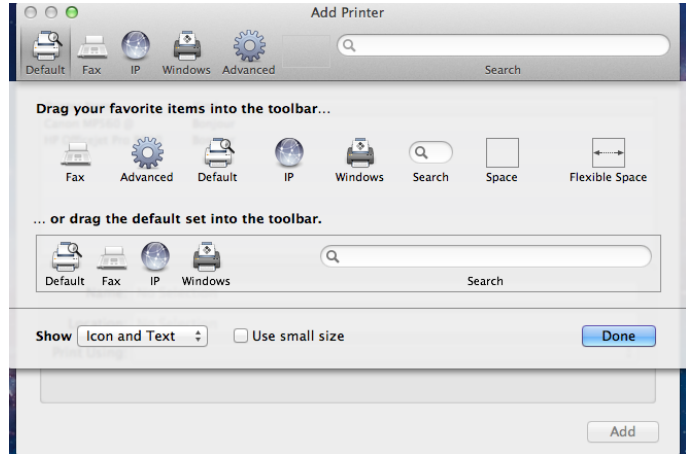
- Open the Print + Scan dialog from System Preferences as seen. Click the + button to setup a new printer.



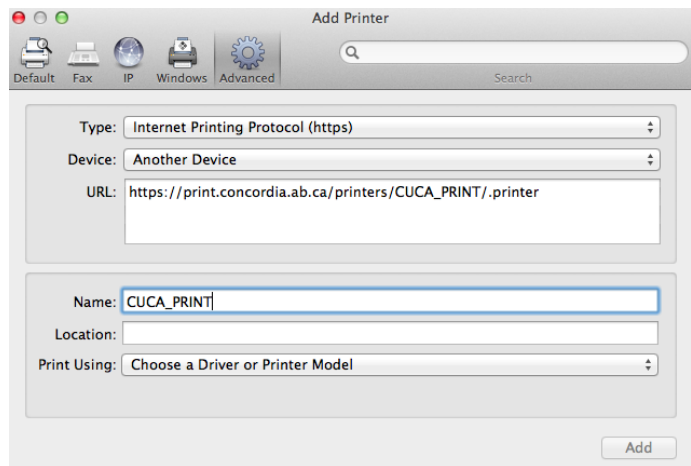
- In the Add Printer dialog, you may or may not have an “Advanced” button in the toolbar, along with “Default”, “Fax”, “IP”, and “Windows”. If you do not have it, you can enable it by holding down “Control” and clicking with the mouse on the toolbar to bring up the menu as seen. Choose “**Customize Toolbar...**”



- You will be presented with a list of buttons to add to your toolbar. Drag the “Advanced” button onto your toolbar as seen and click “Done”.

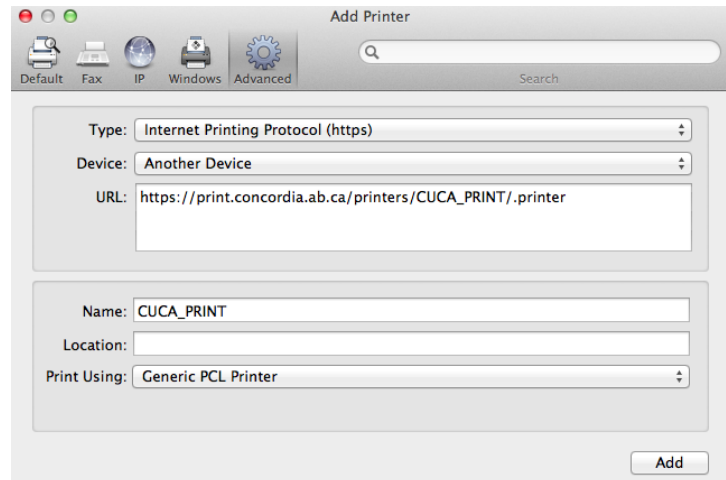


- Back in the Add Printer dialog, click on the Advanced button and fill out the form as follows:



Type: **Internet Printing Protocol (https)**  
Device: **Another Device**  
URL: **https://print.concordia.ab.ca/printers/CUCA\_PRINT/.printer**  
Name: **CUCA\_PRINT**

- In the “Print Using” field, you can either choose “Generic PCL Printer” or install a Konica Minolta driver by using the steps found in the appendix of this document. Note: You will need to install a Konica Minolta driver in order to use more advanced features of the devices such as colour printing.

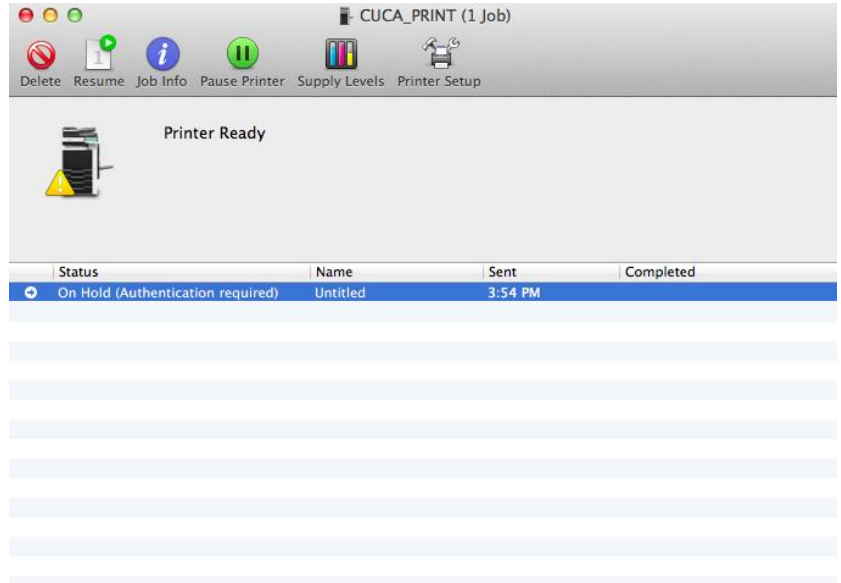


- Once the driver is chosen, click “Add” to finish adding the printer. You will need to supply your login credentials only once you first attempt to print.

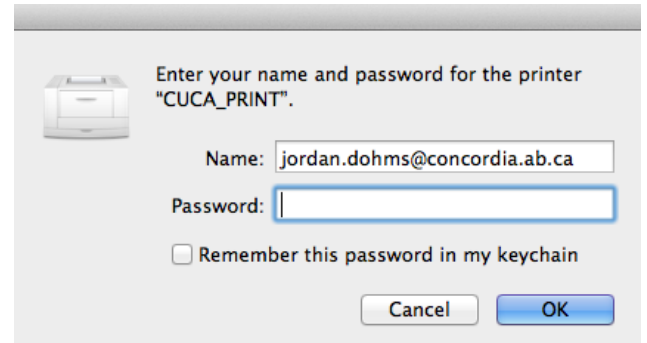
## Usage

- To print, you can use any Mac application such as Safari, TextEdit, etc. Simply prepare your document and bring up the Print dialog and choose the CUCA\_PRINT printer and the appropriate options.

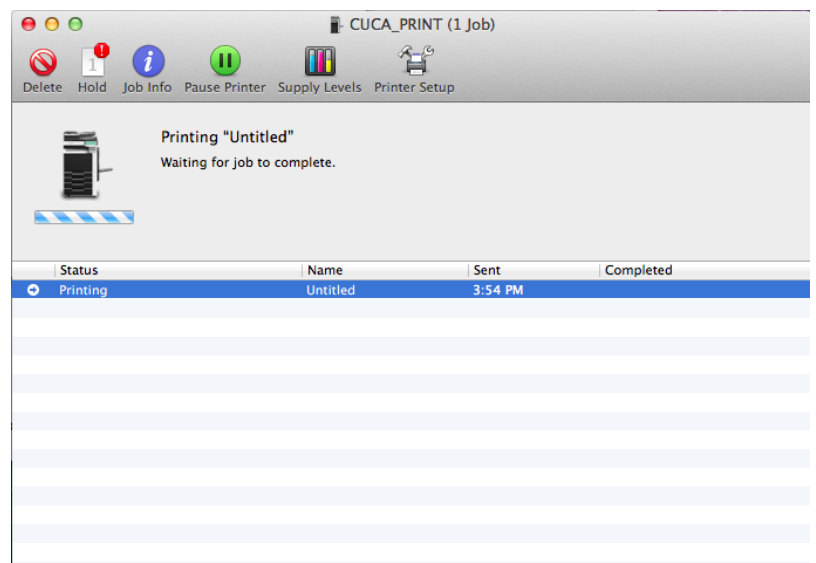
- The first time you print, you will see a Printer icon in the launcher and when you open it, you will see your print job reporting “Authentication required”.



- Click the “Resume” button and you will be prompted with a login. Enter your email address and regular password. If you choose to remember the password, you will be able to print future print jobs without re-entering your credentials.



- When your print job is successfully submitted to the hold-and-release queue, it will show “Waiting for job to complete.” You can now walk up to the Konica device and swipe your ID card to release the print job.



## Appendix: Installing a Konica Minolta Driver (optional)

You may want to install a proper Konica Minolta driver onto your Mac in order to take full advantage of the capabilities of the printers. For example, without a KM driver, you will be unable to print color documents.

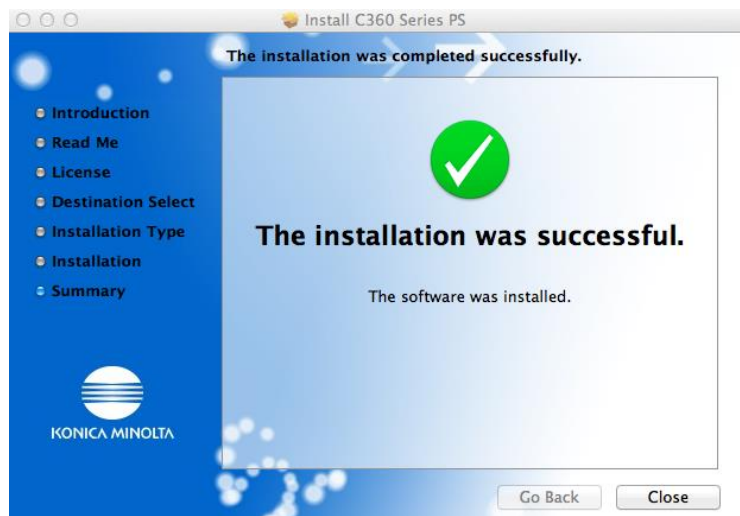
- Navigate to the following address and select the “Drivers” tab. Then choose the proper operating system version. You will be presented with a list of downloads, including multiple versions of the driver. Please review the choices carefully to select the correct one. In some cases the ‘default paper size’ is what distinguishes different drivers. In that case, you will want to choose the driver that is configured for “Letter”.

<http://onyxweb.mykonicaminolta.com/OneStopProductSupport/SearchResults?quickSearch=c280>

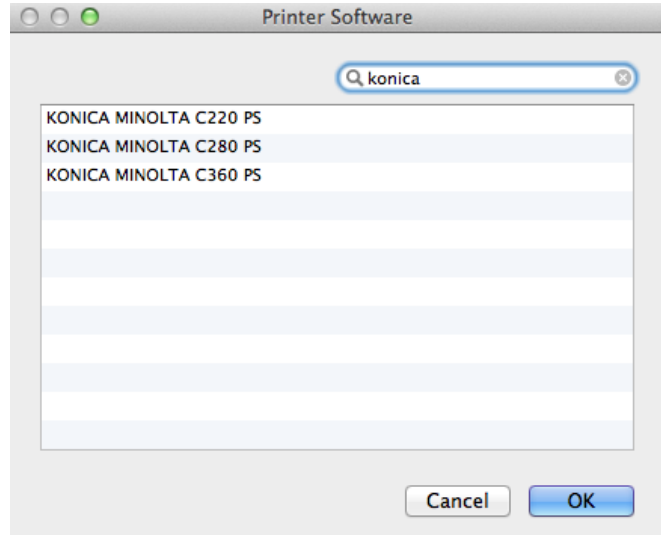
- Once you have downloaded the file, simply open the installer and proceed through the installation wizard, accepting all defaults.



- Once the installer has completed, you can now choose to use a proper Konica Minolta driver for the CUCA\_PRINT printer. To change the driver for an existing printer, simply open the Print & Scan dialog, select CUCA\_PRINT and choose “Options & Supplies...” then the “Drivers” screen.



- Open the “Print Using:” dropdown and choose “Select Printer Software...”. A new dialog will appear, and you can search or browse to locate the proper driver. You will want the one named **KONICA MINOLTA C280 PS** (or similar).
- Some other options will be presented to specify the finisher, punch unit, etc. Because these features on our printer fleet across campus is not all identical, it is recommended to leave them as “None”, unless specifically needed.



The following are the suggested settings:

- Printer Memory: 256MB
- Storage: None
- Paper Source Unit: None
- Duplex Unit: Enabled

## Getting Help

Concordia IT Services also provides some additional information regarding printing on campus at <http://helpdesk.concordia.ab.ca/>

If you have questions or would like assistance related to wireless printing at Concordia, you can contact the IT Services Helpdesk at 780-479-9316 or [helpdesk@concordia.ab.ca](mailto:helpdesk@concordia.ab.ca)